

2.54cm

TITLE OF ARTICLE

2.54cm

(14 Words, Specific and Comprehensible; Calibri, Font Size 14 and Bold)

2.54cm

<sup>1</sup>ELEMO, G.N.\* AND <sup>1</sup>LAWAL, A.K.

(<sup>Affiliation Number</sup> Surname, Initials; Calibri, Font Size 10, Upper case and Bold)

<sup>1</sup>Federal Institute of Industrial Research, Cappa Bus-Stop, Oshodi, Lagos, Nigeria.

(<sup>Affiliation Number</sup> Calibri, Font Size 10, Title Case)

\*Corresponding Author: Email address and/or Telephone number. (Calibri, Font Size 10)

**Abstract (Calibri, Font Size 11, Bold, Align left and Title case)**

Abstract text (250-300 words, Calibri, Font Size 10 and Italicized, Sentence case)

The abstract should describe the main objective(s) of the study and explain how the study was done, including any model organisms used, without methodological detail. It should also summarize the most important results and their significance. The abstract should not exceed 250 words and exclude citations and abbreviations.

**Keywords: (4-6 words, encapsulating the principal subjects covered and 3 should not appear in title; Calibri, Font Size 10, Align left and Bold).**

**Introduction (Calibri, Font Size 11, Bold, Align left and Title case)**

Introduction text (Calibri, Font Size 11, Sentence case, Justified)

The introduction should provide background that puts the manuscript into context and allows readers outside the field to understand the purpose and significance of the study. It should define the problem addressed and its relevance and also include a brief review of the key and up to date literature noting any relevant controversies or disagreements in the field. The introduction should be concluded with a brief statement of the overall aim of the work.

**Materials and Methods (Calibri, Font Size 11, Bold, Align left and Title case)**

Materials and Methods text (Calibri, Font Size 11, Sentence case, Justified)

This section should provide details to allow suitably skilled investigators to fully replicate your study. Specific information and/or protocols for new methods should be included in details. For established protocols, authors may cite articles where those protocols are described in detail but the submission should include sufficient information to be understood independent of these references. We encourage authors to submit detailed protocols for newer or less well-established methods as supporting information. Methods sections of papers on research using human or animal subjects and/or tissue or field sampling must include required ethics statements (details specified below: Specific Reporting Guidelines). Methods sections of papers using cell lines must state the origin of

2.54cm

the cell lines used. Methods sections of papers adding new taxon names to the literature must follow the Reporting Guidelines below for a new zoological, botanical or fungal taxon.

## Results (Calibri, Font Size 11, Bold, Align left and Title case)

Results text (Calibri, Font Size 11, Sentence case, Justified)

This section should describe the tables, figures, schemes and formulae presented in the article. The content of tables and figures should only be repeated in text while drawing inferences to highlight findings in the study. **All figures and tables should precede the text in which they were first mentioned.**

Figures, charts, pictures and diagrams should be provided as good quality originals and **must be in JPEG format**. They must be **black and white** with minimum shading and numbered consecutively using Arabic numerals e.g. Fig.1. Coloured images can be submitted but at an additional publishing cost to the authors. Titles should be provided below figures. Do not use Microsoft word graphic tools and PDF files to generate graphics.

All tables should contain horizontal lines and be numbered using Arabic numerals e.g. Table 1. Tables should always be cited in text in consecutive numerical order. They **must** be in **JPEG format**. For each table, a title explaining the components of above the table should be provided. Footnotes to tables should be indicated by lowercase letters (or asterisks for significance values and other statistical data) and included beneath the table body. All previously published material must be identified by giving the original source in the form of a reference at the end of the table caption.

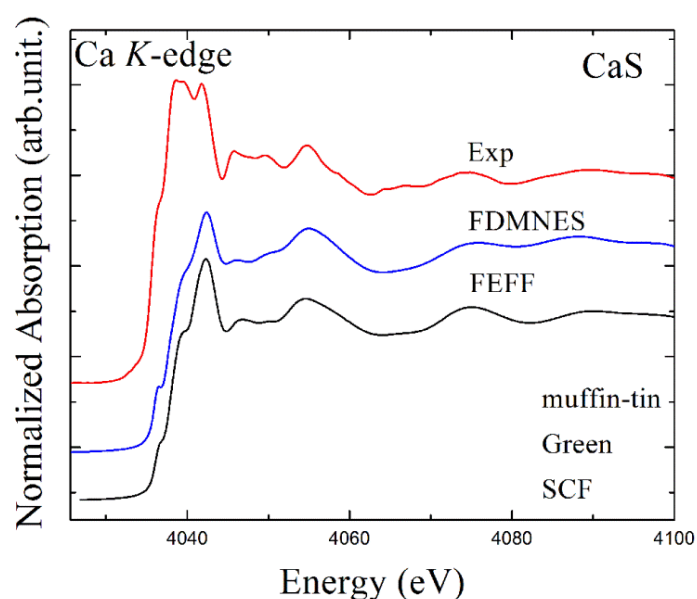


Fig. 1: Comparison of Ca k-edge Experimental and Theoretical ...

(Calibri, Font Size 10, Bold, Centre and Title case)

**Table1: Experimental Procedure Parameters.**  
**(Calibri, Font Size 10, Bold, Centre and Title case)**

S. No	Parameters	Values
1	Melting Changes	Acid lining coreless induction furnace, 140kg, 1890Hz
2	Charges	4.1%D, 2.13%Si, 0.05%P, 0.023%E, 0.11%Cr, 0.31%Mn, 5.2%C, 2.73%Si, 0.59%Mn,
3	Base Metal	0.130%P, 0.026%S, 0.0271%Cr,

**Note: Table text should be Font size 9 prior to conversion to JPEG**

### **Discussion (Calibri, Font Size 11, Bold, Align left and Title case)**

Discussion text (Calibri, Font Size 11, Sentence case, Justified).

The discussion should provide detailed interpretation of these results. Authors should explain how the results relate to the hypothesis presented as the basis of the study and provide a concise explanation of the implications of the findings, particularly in relation to previous related studies and potential future directions for research.

### **Conclusion (Calibri, Font Size 11, Bold, Align left and Title case)**

Conclusion text (Calibri, Font Size 11, Sentence case, Justified).

This section should contain distinct inferences drawn from the findings of the research.

### **Acknowledgement (Calibri, Font Size 11, Bold, Align left and Title case)**

Acknowledgement text (Calibri, Font Size 11, Sentence case, Justified).

Acknowledgments of people, grants, funds, etc. should be placed in a separate section before the reference list. The names of funding organizations should be written in full.

### **References (Calibri, Font Size 11, Bold, Align left and Title case)**

References text (Calibri, Font Size 10, Sentence case, Justified).

Reference list should be in alphabetical order. The **second to last lines of each reference text should be indented**. Examples are listed detailed below.

**For books:** Surname, initials, (year), *title*, edition, publisher, place of publication, **total number of pages** e.g.  
 Smith, M. (2000). *Importance of Information and Communication Technologies*. 4<sup>th</sup> ed. Macmillan. London. 200pp.

**For journals:** Surname, initials, (year), title, *journal name*, **volume**, (specific issue number): page numbers e.g.

#### Single author

Lawal, A.K. (2000). Fibre concentrates from apple pomace and citrus peel as potential fibre sources for food enrichment. *Food Chemistry*, **2** (2): 29-33.

#### Two – three authors

Angelina, G., Gaga, H., and Workan, T. (2003) Peer teaching and learning: Co-constructing language in a dual language first grade. *Language and Education*, **20**: 169–183.

#### 4 or more authors

Adam, E., Angelina, G., Gaga, H., *et al.* (2010) The language learners autobiography: Examining the ‘apprenticeship of observation’. *Language and Education*, **23** (3): 170–180.

**For websites:** Surname, initials, (year), *title* [date, month and year accessed]: (Web address) e.g.

Albert, W. (1989) *Non-Governmental Organizations (NGOs) in Microfinance: Past, Present and Future* [Accessed 14th September 2008]: <http://www.hsb.globalbank.org/html/esd/ngo.htm>.

**The format for 2-3 authors and 4 or more authors applies for books and web based references.**

#### **Supplementary Information (Calibri, Font Size 11, Bold, Align left and Title case)**

Supplementary information presented as text (Calibri, Font Size 11).

Supplementary information **may be added** if maximum number of page is not reached. Heading of should be numbered as S1, S2, S3 and in conformation with table and figure heading as well as figure and table format. Information can be presented as table or figure or text. Only supplementary information (maximum of 4) relevant to the work should be provided.

#### **Note**

- **Headings and sub-headings should not be numbered!!!**
- An author should contribute to all of the following:
  - a. Conception and design of the work, acquisition of data, or analysis and interpretation of data.
  - b. Drafting the article or revising it critically for important intellectual content.
  - c. Final approval of the version to be published.
  - d. Agreement to be accountable for all aspects of the work.
- A letter of undertaking signed by the principal author must be attached, stating that the submitted paper is not under consideration in part or in full for publication in any other journal.

#### **Copyright Notice**

Copyright for articles published in this journal is retained by the journal.

## **Copies of Journals**

Each corresponding author is entitled to a full copy of the published journal in which his article appears. The corresponding author can order for reprints and extra full copies of the issue in which his article appears at a cost.

## **Specific Reporting Guidelines**

### **Human Subject Research**

Methods sections of papers on research using human subject or samples must include written ethics statements specifying the name of the approving institutional review board or equivalent committee(s) and informed consent of participating subjects. Authors should explicitly describe their methods of categorizing human populations, define categories in detail and justify their choices of definitions and categories. It should also include any rules of human categorization required by funding agency for studies involving humans categorized by race/ethnicity, age, disease/disabilities, religion, sex/gender, sexual orientation, or other socially constructed groupings. Authors should explain whether (and if so, how) they controlled for confounding variables such as socioeconomic status, nutrition, environmental exposures, or similar factors in their analysis. In addition, potentially stigmatizing labels should be changed to more current, acceptable terminology. Examples: "Caucasian" should be changed to "white" or "of (Western) European descent" (as appropriate); "cancer victims" should be changed to "patients with cancer."

### **Animal Research**

Methods sections of manuscripts reporting results of animal research must include written required ethics statements specifying the full name of the relevant ethics committee that approved the work, and the associated permit number(s). The organism(s) studied should always be stated in the abstract. We implore authors to follow the ARRIVE (Animal Research: Reporting of *In Vivo* Experiments) guidelines for all submissions describing laboratory-based animal research.

### **Observational and Field Studies**

Methods sections for submissions reporting on any type of field study must include written ethics statements specifying permits and approvals obtained for the work, including the full name of the authority that approved the study. Whether the land accessed is privately owned or protected and if any protected species were sampled. Full details of animal husbandry, experimentation, and care/welfare should be supplied where relevant.

## Cell Line Research

Authors reporting research using cell lines should state when and where they obtained the cells, giving the date and the name of the researcher, cell line repository, or commercial source (company) of the cells. Authors must also include the following information for each cell line:

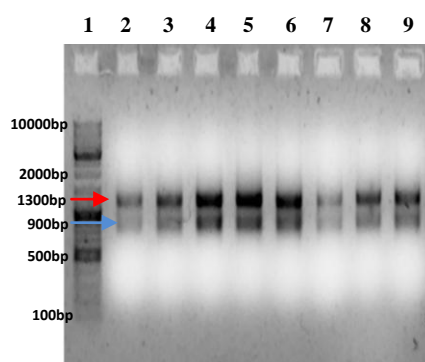
For *de novo* (new) cell lines, including those given to the researchers a gift, authors must follow our policies for human subject research or animal research. The ethics statement must include details of institutional review board or ethics committee approval;

For human cells, confirmation of written informed consent from the donor, guardian, or next of kin;

For established cell lines, the materials and methods section should include a reference to the published article that first described the cell line and or the cell line repository or company the cell line was obtained from, the catalogue number, and whether the cell line was obtained directly from the repository/company or from another laboratory.

## Blots and Gels

Authors of manuscripts reporting results from blots (including Western blots) and electrophoresis gels the image should not be adjusted in any way that could affect the scientific information displayed, e.g. by modifying the background or contrast. All blots and gels that support results reported in the manuscript should be provided. Original uncropped and unadjusted blots and gels, including molecular size markers should be provided in the figures. Lanes should not be overcropped around the bands and the image should show most or all of the blot or gel. Any nonspecific bands should be shown and an explanation of their nature should be given in result text. The image should include all relevant controls, and controls should be run on the same blot or gel as the samples. See sample below:



**Title of Figure (see format above)**

Brief description of gel and legends as foot notes (Calibri, Font size 10, Centre)